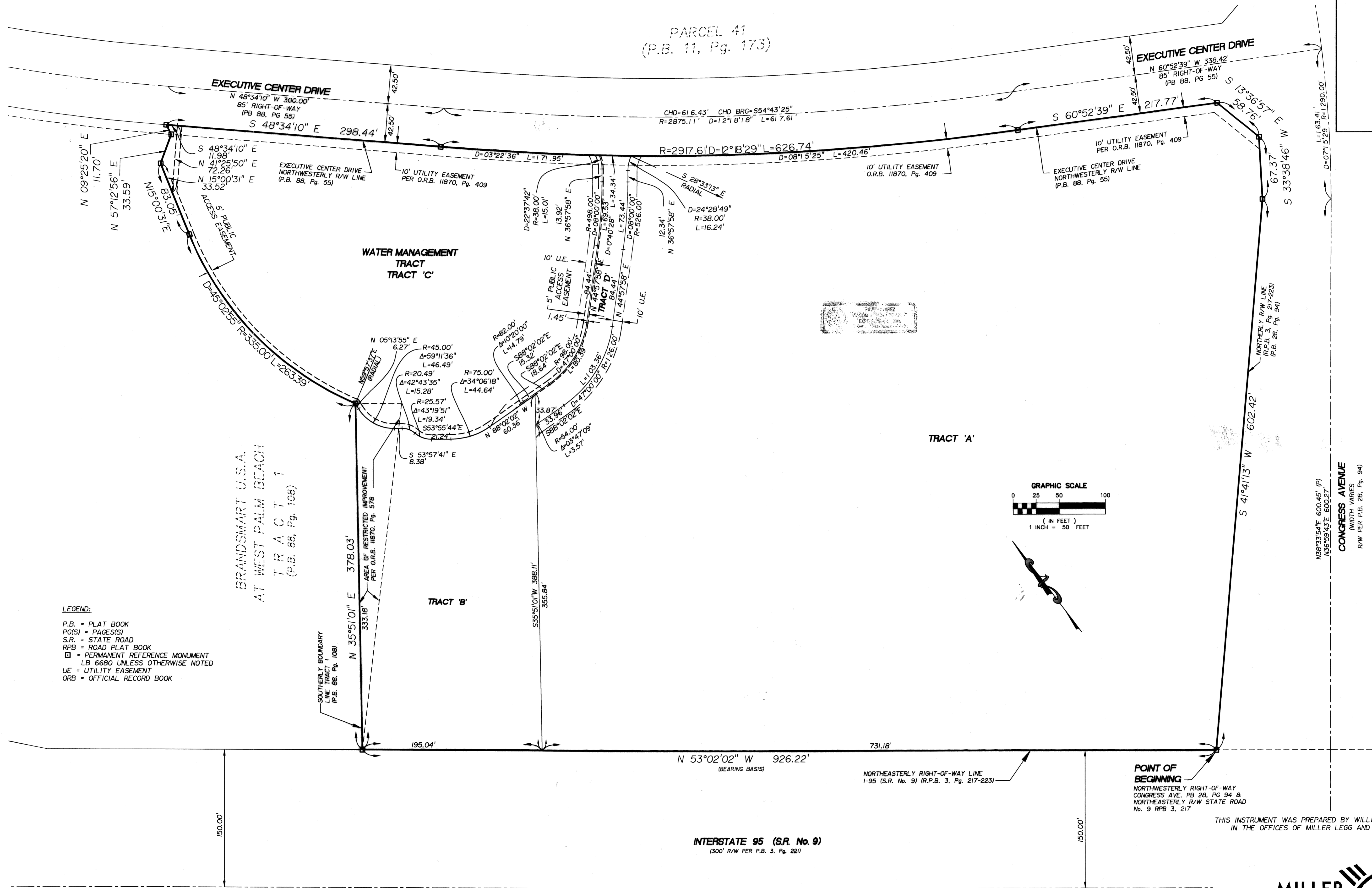


COURTNEY LAKES

LYING IN SECTION 20, TOWNSHIP 43 SOUTH, RANGE 43 EAST,
CITY OF WEST PALM BEACH, PALM BEACH COUNTY, FLORIDA.
JUNE 2005
SHEET 2 OF 2

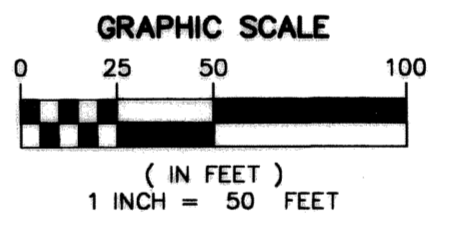
77

PARCEL 41
(P.B. 11, Pg. 173)



LEGEND:
P.B. = PLAT BOOK
PG(S) = PAGE(S)
S.R. = STATE ROAD
RPB = ROAD PLAT BOOK
□ = PERMANENT REFERENCE MONUMENT
LB 6680 UNLESS OTHERWISE NOTED
UE = UTILITY EASEMENT
ORB = OFFICIAL RECORD BOOK

BRANDSMART U.S.A.
AT WEST PALM BEACH
TRACT 1
(P.B. 88, Pg. 108)



$N 86^{\circ}33'54'' E$ 600.45' (P)
 $N 86^{\circ}59'43'' E$ 600.27'
CONGRESS AVENUE
(WIDTH VARIES)
R/W PER P.B. 28, Pg. 94

THIS INSTRUMENT WAS PREPARED BY WILLIAM D. O'CONNOR, PSM
IN THE OFFICES OF MILLER LEGG AND ASSOCIATES, INC.

MILLER LEGG
Palm Beach Office: 2005 Vista Parkway - Suite 100
West Palm Beach, Florida - 33411-2719
561-689-1138 - Fax: 561-689-8108
www.millerlegg.com
Certificate of Authorization: LB6680